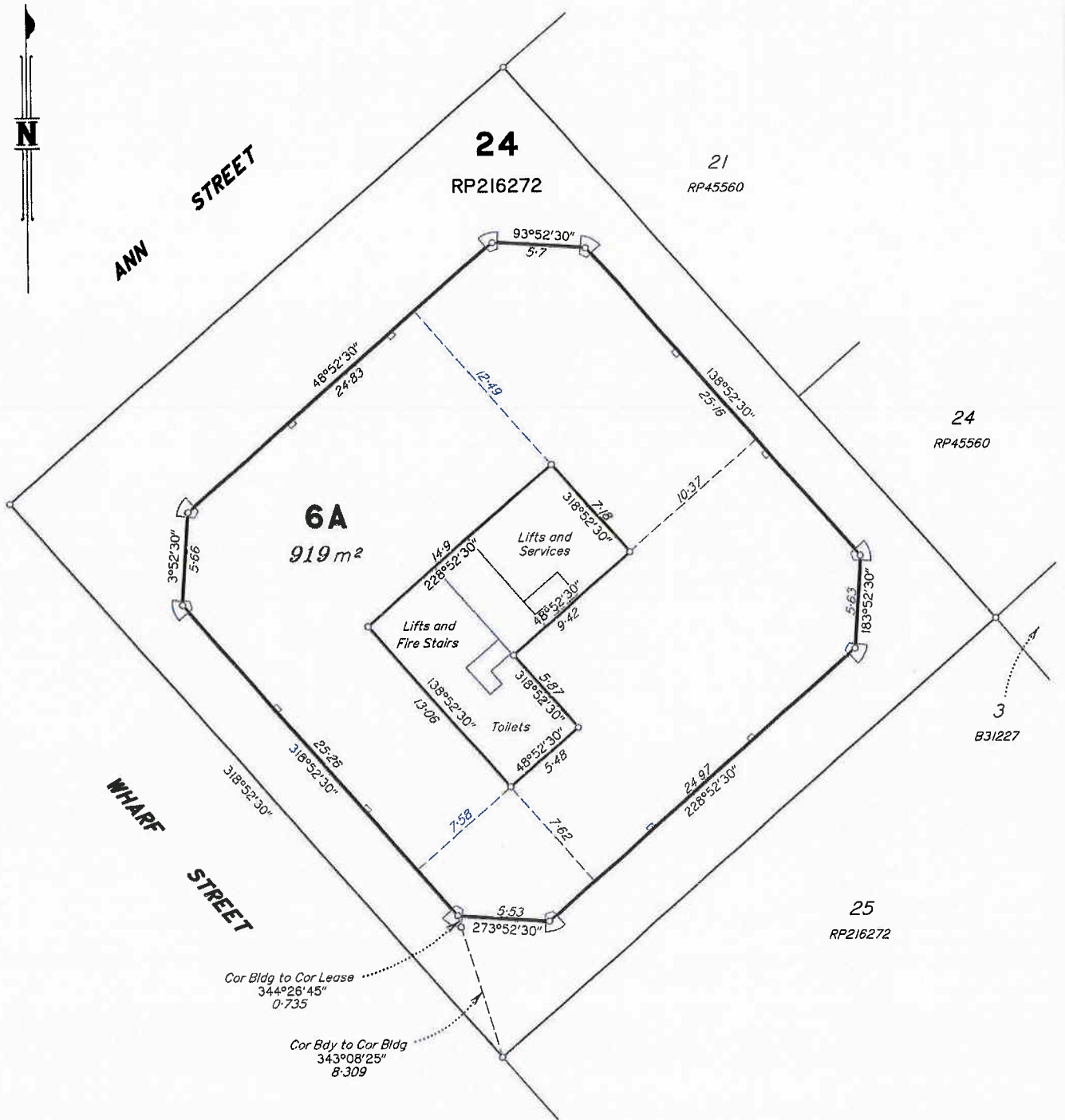


NOTE: Lease Areas have been calculated using the Net Lettable Area (Office Building) as defined by the Property Council of Australia - March 1997.



LandPartners Limited, ACN 118 146 008
Cadastral Surveyor, certify that the details shown on this sketch plan are correct.

LANDPARTNERS LIMITED ACN 118 146 008
The Common Seal of
Director
Director
09/10/2008
Date

PASSED & ENDORSED

BY: LANDPARTNERS LIMITED ACN 118 146 008

SIGNED *Gayle* DATE: 9.10.08
DESIGNATION: Liaison Officer



NOTE: The scale bar above determines the size of the original plan. (A3)

SKETCH PLAN OF LEASE 6A
Being the whole of the Sixth Floor
of a building situated on
Lot 24 on RP216272



LANDPARTNERS
built environment consultants

Level 3
59 Melbourne Street
South Brisbane
Queensland 4101
PO Box 3616
South Brisbane BC
Queensland 4101
p: (07) 3842 1000
f: (07) 3842 1001
info@landpartners.com.au
www.landpartners.com.au



benchmark
EXCELLENCE
AS/NZS ISO 9001

Title: 18083196	File/Plan: 505000B3 BR005050-000.006 B
Drawn: GCR 30/09/08	LE2733
Checked: ADR 07/10/2008	
Scale: SEE BAR SCALE	

STREET ADDRESS: 369 Ann Street, Brisbane
PARISH: NORTH BRISBANE COUNTY: Stanley